

STUD MOUNTED CUTOUTS INSTALL PROCEDURE

1

Take measurements of the wall, determining location for cutouts.



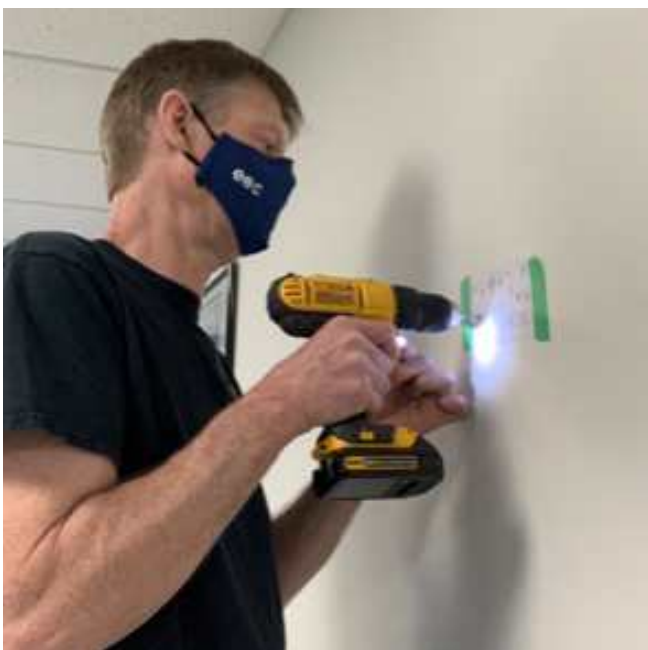
2

Tape template to the wall, ensuring it is level and in the correct spot. If the wall is painted, use tape that won't peel any paint.



3

Use a centre punch to mark the holes to be drilled.



4

Drill the stud holes according to the template, using the correct drill bit size for the studs and type of drill for the wall.

STUD MOUNTED CUTOUTS INSTALL PROCEDURE

5

Screw studs into the back of the cutouts.



6

Clean the dust from the wall and apply glue to the studs.



7

Apply glue to the back of the cutouts, using enough so it doesn't ooze out the sides.



8

Remove the template and using it as a reference, install cutouts.

STUD MOUNTED CUTOUTS INSTALL PROCEDURE

9

Final check to make sure it is level.



10

Vacuum any dust on the floor.