

STUD MOUNTED PLAQUES INSTALL PROCEDURE

1

Take measurements of the wall, determining location for plaque.



2

Tape template to the wall, ensuring it is level and in the correct spot. If the wall is painted, use tape that won't peel any paint.

3

Use a centre punch to mark the holes to be drilled.



4

Drill the stud holes according to the template, using the correct drill bit size for the studs and type of drill for the wall.

STUD MOUNTED PLAQUES INSTALL PROCEDURE

5

Screw studs into the back of the plaque.

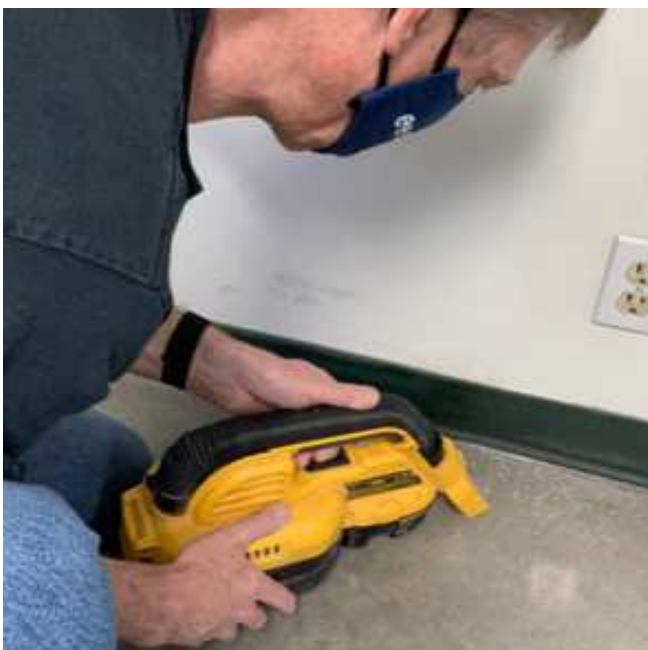


6

Clean the dust from the wall.
Apply grip and grab glue to the studs and the back of the plaque.

7

Remove the template and using it as a reference, install plaque.



8

Vacuum any dust on the floor.